



KA+NA

JEWELS





*Joti Anand obeys no spirit but her own.*

### **MAKER**

DRAWING INSPIRATION FROM RADIANT COLORS, HIDDEN DETAILS, INTRIGUING NATURAL BEAUTY OF STONES, AND THE GRACEFUL MAGNIFICENCE OF NATURE, JOTI'S CREATIONS PUSH THE BOUNDARIES OF DESIGN, FORM AND FUNCTION TO CREATE A WEARABLE PIECE OF ENDURABLE ART. THINK BOLD PARADIGMS, LUSTROUS GEMS AND VINTAGE DELICACIES.

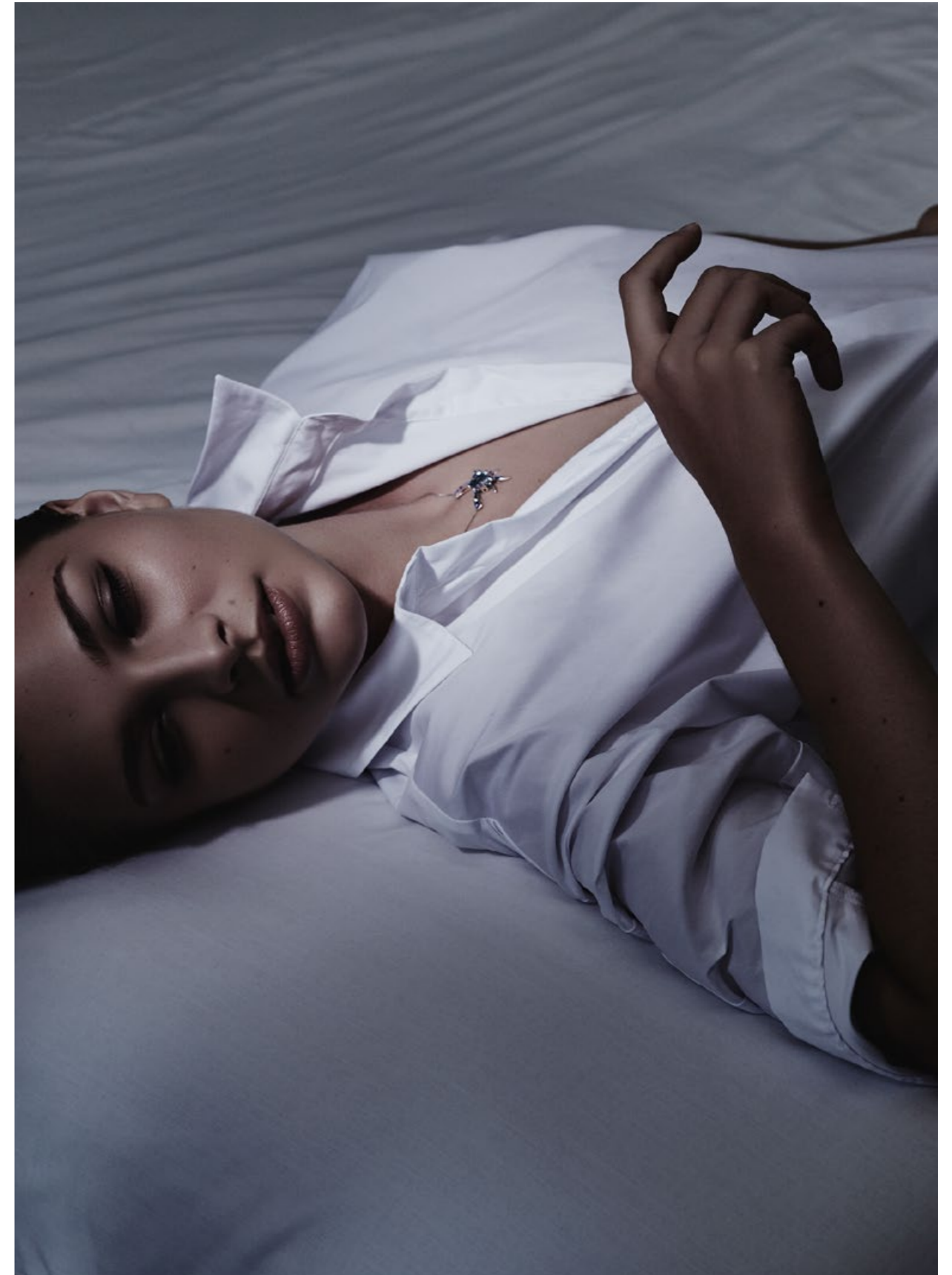
### **DAWN**

COLORS AND CONTOURS FLOAT IN AN IMAGINARY WORLD WHERE PERSPECTIVE, WEIGHT AND SHADOW DO NOT EXIST. IT HAS BEEN SAID THAT HER WORK EXISTS ON THE CUSP OF A DREAM AND A SAUVAGE EPISODE.

### **DUSK**

**À L'ŒUVRE ON RECONNAÎT L'ARTISAN  
YOU CAN TELL AN ARTIST BY HER WORK.**

JOTI'S LOVE AFFAIR WITH BEAUTIFUL THINGS BEGAN LONG AGO. CREATING A SMALL GREAT UNIVERSE DEVOTED TO THE EXOTIC MODERN WOMAN STEEPED IN STYLE, ELEGANCE AND FASHION.





*We don't throw away our stones,*  
**WE SIMPLY PUT THEM IN THEIR PLACE.**

---



**CITRINE SIREN**

**NECKLACE**  
CITRINE STONE AND BEAD DESIGN  
EMBELLISHED BY DIAMONDS SET  
IN 18K YELLOW GOLD.

**EARRINGS**  
SMOKY QUARTZ CENTER WITH  
INTRICATE DIAMONDS AND  
ROUND CITRINES.





## ENAMORED BY SAPPHIRE

### RING

AN ORNATE CARVED SAPPHIRE PEAR TRACED IN THE SHIMMER OF DIAMONDS AND RUBY PAVÉ SECURE WITHIN SETTINGS OF 18K YELLOW GOLD.

### EARRINGS

SAPPHIRE PEAR (APPROX. 21.96CT) AND RUBY CHIPS ENCLOSED IN 18K YELLOW GOLD MILIGRAIN FINISH.





## INVITATION TO INFINITY

**EARRINGS TOP**  
CONTRASTING WHITE AND BLACK  
DIAMONDS IN 18K WHITE GOLD  
WITH BLACK ONYX DROPS.

**EARRINGS BOTTOM**  
EMERALD AND CHAMPAGNE  
DIAMONDS SET IN 18K YELLOW  
GOLD WITH PERIDOT DROPS.



## PLAYING WITH CHARMS

**BRACELET TOP**  
0.10CT ROUND BRILLIANT DIAMOND  
TENNIS BRACELET WITH CHARMS  
OF MIXED COLORED PRECIOUS  
AND SEMI-PRECIOUS STONES  
IN 18K WHITE GOLD.

**BRACELET CENTER**  
0.05CT ROUND BRILLIANT DIAMOND  
TENNIS BRACELET WITH CHARMS  
OF MIXED COLORED PRECIOUS  
AND SEMI-PRECIOUS STONES  
IN 18K WHITE GOLD.

**BRACELET BOTTOM**  
0.05CT ROUND BRILLIANT DIAMOND  
TENNIS BRACELET WITH CHARMS  
OF DIAMONDS IN 18K WHITE GOLD.





*There's beauty to be found in imperfections.*

YOU MIGHT JUST HAVE TO STEP A LITTLE CLOSER TO SEE IT.

---





### HAUTE HEMATITE

**BRACELET TOP**  
18K YELLOW MILIGRAINED  
GOLD BRACELET IS SET WITH  
HEMATITE AND ACCENTED WITH  
TSAVORITE BAGUETTES AND  
CHAMPAGNE DIAMONDS.



### FIRE AGATE

**BRACELET BOTTOM**  
FIRE AGATE SURROUNDED BY  
MULTI-COLORED PRECIOUS AND  
SEMI-PRECIOUS STONES IN  
18K YELLOW GOLD AND CHAIN  
BRACELET EMBELLISHED WITH  
CHAMPAGNE DIAMOND COLETTES.





## VOW TO WOW

**EARRINGS, RING AND BRACELET**  
TO MATCH IN 18K WHITE GOLD  
SET WITH FOUR SYMMETRIC  
CORNERS OF EMERALDS, RUBIES,  
SAPPHIRES AND AMETHYSTS  
ENHANCED GEOMETRICALLY  
BY WHITE DIAMONDS.







## BLOOMING RUBY

**EARRINGS**  
MOZAMBIQUE FLORALRUBY,  
EMERALD CHIPS AND FRESHWATER  
PEARLS SET IN 18K YELLOW GOLD.





## L'ARTISAN LABRADORITE

**CUFF**  
INSPIRED 18K BEATEN YELLOW  
GOLD, SET WITH LABRADORITE  
CENTER STONE (APPROX. 23.21CT)  
AND ENHANCED BY SAPPHIRES,  
AQUAMARINES, EMERALDS AND  
CHAMPAGNE DIAMONDS.





## BOHEMIAN RAPHSODY

**NECKLACE**  
RHODOCHROSITE, ROSE QUARTZ  
AND RUBY-IN-ZOISITE SET IN 18K  
YELLOW GOLD. (LENGTH 14.5')

**EARRINGS**  
RHODOCHROSITE AND ROSE QUARTZ  
BEAD IN 18K YELLOW GOLD.

**BRACELET**  
RHODOCHROSITE EMBELLISHED  
WITH RUBIES AND FRESHWATER  
PEARLS IN 18K YELLOW GOLD.



**GEOMETRIC GLAM**

**EARRINGS**  
BLACK AND WHITE DIAMONDS ETCHED  
IN 18K WHITE GOLD.



### MOSS AGATE GLOSS

**BRACELET**  
MOSS AGATE FLANKED BY  
18K YELLOW GOLD FLOWERS  
EMBEDDED WITH EMERALDS.



### SERAPHENITE SYMBOLISM

**PENDANT**  
SERAPHENITE HEADED BY KESHI  
FRESHWATER PEARLS WITH  
CHAMPAGNE DIAMONDS IN 18K  
YELLOW GOLD.





**PIÈCE DE RÉSISTANCE**

**BRACELET**  
MATCHED FANCY SAPPHIRE, DIAMOND,  
EMERALD AND SAPPHIRE BAGUETTES  
SET IN 18K YELLOW GOLD.





**PAISLEY PERFECTION**

**CUFF**  
MILIGRAINED 18K YELLOW GOLD  
IN A MIX OF COLORED ENAMEL  
AND DIAMONDS.



## BLUE CHALCEDONY

**CUFF TOP**  
BLUE CHALCEDONY CENTER  
STONE SURROUNDED BY DIAMONDS  
AND CORAL COLORED ENAMEL,  
SAPPHIRES, PERIDOTS IN HIGH  
POLISH 18K YELLOW GOLD.



## DROPS OF DESIRE

**CUFF BOTTOM**  
COLOR CHANGE SAPPHIRE AND  
RUBELLITE IN HIGH POLISH 18K  
YELLOW GOLD.







**AVANT-GARDE AQUAMARINE**

**PENDANT AND RING**  
MODERN DESIGN 18K WHITE GOLD  
AQUAMARINE CENTER ACCENTED  
BY SAPPHIRES.



**VICTORIA ALBERT ART DECO**

**EARRINGS**

CAST IN 18K WHITE GOLD, STUDED  
WITH WHITE DIAMONDS, EMERALDS,  
AND SAPPHIRES.





## **CARNELIAN CRUSH**

**CUFF**  
FAMOUS JAIPUR NAVRATNA (9 GEMS)  
WITH TUMBLED CARNELIAN.

**NECKLACE**  
MATCHING. (LENGTH 13')



## CUFF IT OUT

**CUFFLINKS TOP**  
TIGERS EYE SET IN 18K HIGH POLISH  
WHITE GOLD.

**CUFFLINKS BOTTOM**  
UNHEATED AMETHYST CHIP IN 18K  
YELLOW GOLD.





## AMETHYST AMOUR

### NECKLACE

UNHEATED AMETHYST CHIPS SET IN  
EVERLASTING JAIPUR JADAU (BEZEL)  
SETTING EMBELLISHED WITH WHITE  
DIAMONDS IN 22K YELLOW GOLD.

### BRACELET

MATCHING.





## **GOLDEN RUTILATED QUARTZ**

**RING**  
RUTILATED QUARTZ PEAR IN BEZEL  
SETTING FLANKED BY WHITE  
AND BLACK DIAMONDS IN 18K  
YELLOW GOLD.



**BROACHED BY BRILLIANCE**

**PENDANT BROACH**  
SET IN DIAMONDS, RUBIES AND  
EMERALDS, WITH A SOUTH SEA  
PEARL DROP IN 18K WHITE GOLD.





**WISFUL IN WHITE**

**EARRINGS TOP**

WHITE DIAMONDS WITH RUBY AND BLACK DIAMOND PAVÉ DOMES IN 18K WHITE GOLD.



**ALMOND ALLURE**

**EARRINGS BOTTOM**

WHITE AND BLACK DIAMONDS ACCENTED BY RUBIES IN HIGH POLISH 18K WHITE GOLD.







[INFO@KAINAJEWELS.COM](mailto:INFO@KAINAJEWELS.COM)

[WWW.KAINAJEWELS.COM](http://WWW.KAINAJEWELS.COM)